

Building Stories Heritage Trail Map

Collect Building Stories cards from the venues marked in red on this 1825 map of Tewkesbury.

Cards for buildings marked in black or venues closed on the day will be available from Watson Hall, Tewkesbury Information Centre (The Old Hat Shop) and Tewkesbury Library.

1. Healing's Mill, Quay Street
2. The Anchor, 42 High Street
3. Tudor House Hotel, 51-53 High St
4. Black Bear Inn
5. King John's Bridge
6. Tewkesbury Library, Sun Street
7. Sabrina Cinema
8. Rose Theatre
9. Old Tewkesbury Railway
10. No. 114 High Street
11. Nos. 117-118 High Street
12. Nos. 27-29 High Street
13. Tewkesbury Town Hall
14. The Wheatsheaf Inn, 132 High St
15. Tewkesbury Cinema
16. Tewkesbury Museum, 64 Barton St
17. Methodist Church
18. Berkeley Arms, 8 Church Street
19. No. 9 Church Street
20. The Old Hat Shop, 100 Church St
21. The Old Curiosity Shop, 91-92 Church Street
22. Nos. 82-83 Church Street
23. Whisky Distillery, 40 Church Street
24. Friends Meeting House, 16-18 St Mary Lane
25. The Old Baptist Chapel
26. The Abbey Mill
27. Tewkesbury Abbey

Building Stories: Exploring Tewkesbury's High Street Heritage

Come and take part in the Building Stories High Street Heritage Trail.

Collect your own bespoke set of Top Trumps style cards created by children from Tewkesbury C of E Primary School, focussing on the architecture and heritage of some of Tewkesbury's most historic buildings.

The Building Stories cards are freely available for visitors to collect from the corresponding shops and businesses on Tewkesbury's main streets indicated on the map overleaf. Cards for any buildings that are not accessible on the weekend of the heritage trail are available from Watson Hall, Tewkesbury Information Centre and Tewkesbury Library.

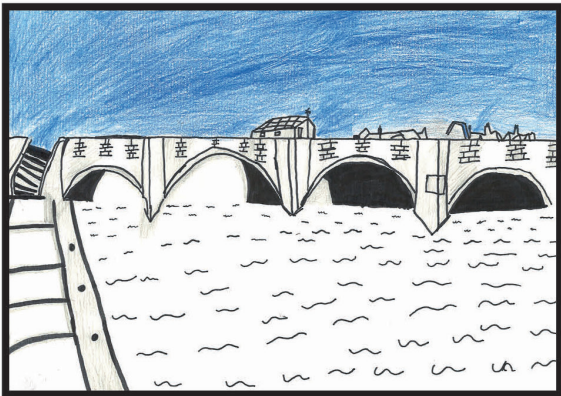
For more about the Tewkesbury High Street Heritage Action Zone visit www.tewkesbury.gov.uk/hshaz

For more about the Building Stories high street heritage project visit www.locallearning.org.uk/building-stories

For more about Tewkesbury's history visit <https://tewkesburyhistory.org>

1825 map of Tewkesbury courtesy of Know Your Place <https://maps.bristol.gov.uk/kyp/?edition=glos>

King John's Bridge



According to tradition, the bridge was built by King John prior to his accession to the throne, and records show that oak trees for building a bridge were requested in 1205.

Years since built	818
Glazing factor	0
Status factor	70

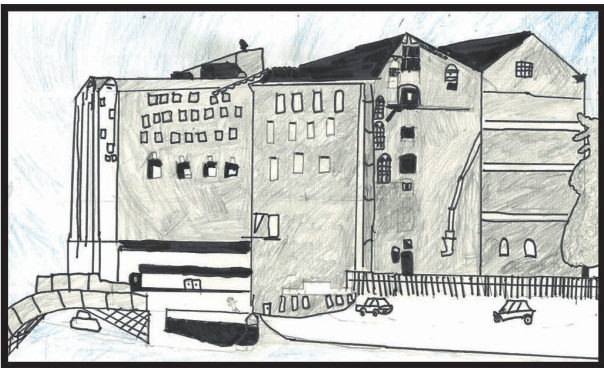
Rules of play

When you have collected your free set of Building Stories high street heritage cards, find somewhere to sit down with a small group of people to play the game.

The object is to win all the cards in the deck by having the highest stats for the chosen category (years since built, glazing factor, status factor) for each round of play.

- Shuffle the cards
- Deal face down so all players have the same number of cards
- Players hold their cards face up in a stack so only the top one is visible
- Person to left of dealer starts play and chooses one category from the card saying the corresponding number for that category, for instance, Status factor – 120
- Other players compare their values for the chosen category for this round and the card with the highest value wins
- The player with the winning card collects all the losing cards and places them at the bottom of their deck
- If there is a tie, all cards are placed in the middle and another round is played. The last person to call the highest category chooses a new category for this round
- Whoever wins the round then chooses the next category from their next card
- Continue until one player has all the cards and is the Building Stories winner.

Healing's Mill



In 1892 it produced 25 sacks of flour an hour and it was said to be the most advanced mill in England. On the 20th of October 2006 the mill officially closed down.

Years since built	158
Glazing factor	8
Status factor	70